

**Hours**

Mon/Tues/Wed/Thu:  
10:00am to 8:00pm

Friday & Saturday:  
10:00am to 5:00pm

Closed:

Sundays

Monday, Sep. 2

Saturday, Sep. 21

**Park & Pickup Hours**

(Come to the Pickup Window or delivery to your vehicle)  
Same hours as above

**Meetings**

**SNHL Board**

October 9, 7:00pm

**SNHL Friends**

TBA

LOVE YOUR LIBRARY 

September is Love Your Library Month!

Libraries receive a pro-rated match from the Jack Buncher Foundation for all donations received during the month. But that doesn't mean we can't have fun while we FUNdraise! **Check out the upcoming events sure to satisfy the book lover, trivia lover, fun lover, library lover in YOU!** See p. 3 for all the details and programs!

**Love Your Library Wish Tree**

In-kind donations make a huge difference in the lives of our community. Visit our Amazon wish list to help YOUR library or pick up the list by our wish tree!

We always need these new items for upcoming programs, our Library of Things collection, print magazines or items we use to run the Library.



**Our Elevator Project has begun! Please see page 4 to plan your visit safely!**



**Donate**



Please follow us!



1822 Mt. Royal Blvd  
Glenshaw PA 15116  
412-486-0211  
shalerlibrary.org

Page 2—Monthly/Weekly Get-Togethers  
Page 3—Love Your Library—Great Fun for those 21+! Show Your Support in September; Meditation Sessions Return; Botanic Drawing Classes  
Page 4—Elevator Project; Legal Seminars; THANK YOU to our Summer Event Sponsors!  
Page 5—History of Pro Football; Sci-Fi Authors Visit; Why is Play Important for Your Health?  
Page 6—NEW Programs—Storytelling and Dancercize! Ongoing Groups and Seminars  
Page 7—News on Libby & hoopla; Schedule Notes; Thank You Summer Reading Sponsors!  
Page 8—Rotary Golf Outing; Shaler Township News; Elfinwild Lions Club Oldies Dance; Mission Mahi Truck; Passes to Historic Sites

# Monthly/Weekly Get Togethers

Join us monthly or weekly for any of the following activities! Always open to new members.

## MONTHLY GET TOGETHERS



### Monday Night Book Group

Second Monday of the month, 6:30pm

Reads a wide variety of material, from newer best sellers to classics. Contact Sharon at [mcraes@shalerlibrary.org](mailto:mcraes@shalerlibrary.org)

**Sep. 9:** *Saturday Night at the Lakeside Supper Club*  
by J. Ryan Stradal

**Oct. 14:** *The Vanishing Half* by Brit Bennett

### Mystery Book Group

Third Thursday of the month, 2:30pm

Reads mysteries and thrillers.

Please contact Beth at [lawryb2@shalerlibrary.org](mailto:lawryb2@shalerlibrary.org)

**Sep. 19:** *How Can I Help You* by Laura Sims

**Oct. 17:** TBA

### Seeking the Spiritual Book Group

Monthly on Wednesdays; dates vary, 6:30pm

**Sep. 18:** *The Sacred Art of LovingKindness*  
by Rami Shapiro

**Oct. 23:** *Being Mortal* by Atul Gawande

More info at [tinyurl.com/shalerseekers](http://tinyurl.com/shalerseekers)

### Sense & Sound: A Fresh Perspective on Poetry

Last Tuesday of the month at 6:30pm

Please contact Ingrid at [kalchthaleri@gmail.com](mailto:kalchthaleri@gmail.com)

Register: [tinyurl.com/shalerpoetry](http://tinyurl.com/shalerpoetry)

**Sep. 24:** Poet Bart Solarczyk

**Oct. 29:** Poet Edgar Allen Poe

## WEEKLY GET TOGETHERS



### Exercise Class with John Uddstrom

Mondays & Fridays, 8:45am-9:45am

Requires Release Form at first session.

Drop-in. \$2.00 fee payable to instructor.

Please contact Adult Services with questions.

### SNHL Card Playing Group

Tuesdays, 1:00-4:00pm

Community-led. Drop-in. 500 Bid.

New players always welcome.

### Needles & Hooks by the Books

Wednesdays, 2:00-3:00pm

Community-led. Drop-in.

This group meets to knit and crochet.

## MONTHLY GET TOGETHERS CONTINUED...

### Food for Thought

Second Wednesday of the month at 1:00pm

Community-led. Drop-ins welcome.

**Sep. 11:** Box Lunches

**Oct. 9:** Pumpkins & Apples

### Rummikub Game Night

First Thursday of the month at 6:00pm

Community-led. Drop-ins welcome. Come join in the fun! Always seeking new players!

### Movies on Your Mind

First Friday of the month at 6:00pm

[Tinyurl.com/shalermovie](http://Tinyurl.com/shalermovie)

**Sep. 6:** American Fiction

**Oct. 4:** Dream Scenario

### Art Gallery

September: *Photography by Anita Schorr*

### Display Cases

September: *Steel City LUG (Legos!)*  
*Love Your Library Month*

*(Ask about displaying in our cases.)*

Programs

LOVE YOUR LIBRARY 

Fun Events

**Puzzle Competition for Adults**  
September 14. 7:00 p.m.

Gather a team and compete against others to see how fast you can complete a 500-piece puzzle. Exercise your brain and help support your Library. Prizes for the winners!



- ♥ \$20.00 per person (teams of up to 5)
  - ♥ Adults 21+
  - ♥ BYOB and snacks
- Pizza and local brews too!

REGISTER & PAY on our Calendar

**Local Book Club Trivia Bonanza!**  
September 19. 6:30 p.m.

Brought to you by the Hampton, Northern Tier and Shaler Libraries!

Your favorite local libraries are teaming up for a fun evening of celebrating our local neighborhood book clubs! All trivia is based on popular reads, oldies but goodies, celebrity book clubs, book to film, and more categories.



Held at Hampton Library!

- ♥ \$10.00 per person (teams of 8 or fewer)
  - ♥ Adults 21+
  - ♥ BYOB (corkage fee) and snacks
- REGISTER & PAY on our Calendar

*You can also support us by...*

- Buying some LYL swag or putting up a yard sign
- Buying a raffle ticket for a chance to win great prizes
- Adopting a magazine subscription or author
- Honoring a loved one or celebrating an event with a Memorial/Honor Book purchase
- Contributing to our annual appeal
- Making a direct financial donation
- Making a direct Charitable Giving donation from your IRA

**ColorFALL Leaves in Colored Pencil**  
Mondays, 6:00-8:00pm

Our popular Botanical Drawing Class at SNHL for adults returns for another six-week session. Guided by Robin Menard, teacher and botanical illustrator, you'll delight in learning how to draw beautiful leaves in fall colors.



Cost: \$50.00 for 6 sessions:  
Mondays 10/7, 10/14, 10/21, 10/28, 11/4, 11/11  
Limit: 20 people  
Supply list available at the Reference Desk.  
Paper will be provided.

REGISTER AND PAY HERE.

Join Shaler North Hills Library for a virtual program:

*Meditation for Everyone*

*Friday Mornings from 9:30-10:00 AM*  
*September 13 through October 18*

*Carve 30 minutes out of your week to learn simple and practical meditation techniques that can easily be applied in everyday life.*

*Led by certified guide Cindi Ballard.*

*If you have not attended previously, please contact Beth at lawryb2@shalerlibrary.org for some introductory materials before joining.*



## News & Notes

### IMPORTANT NEWS!!

#### ELEVATOR PROJECT BEGUN AUGUST 19.

Estimated to run 3-4 weeks.

#### What does this mean for you?

- **No Elevator Service for 3-4 Weeks:** There will be NO elevator service during this period. Both levels will remain open.
- **Plan Your Visit:** If you are unable to use the stairs, please plan your visit accordingly, as there **won't be access to the 2nd floor restrooms from the 1st floor. We now have a porta-john in the rear parking lot!**
- **Borrowing Items:** You can still visit to borrow items or use our Pick-Up Window.
- **Entrance for Kids and Families:** Kids and families may enter **through the front doors facing Mt. Royal Blvd.** Please note that there are steps onto the porch and into the building, making it difficult to enter and exit with strollers.
- **Returning Materials (Kids & Teens):** We urge kids and families to **return kids' materials in the bin located on the front porch facing Mt. Royal.** Staff will be able to process and shelve them on the same floor.
- **Returning Materials (Adults, Large Print, DVDs):** Please continue to return on the lower level or the main book drop so we can easily shelve on the same floor.
- **Program Entrance:** If attending a program in the Community Room, you may enter through the front doors facing Mt. Royal. Please note there are steps to enter the building at this entrance!
- **No Donations Accepted:** We will **NOT** be accepting donations during the elevator upgrade. Please hold on to them or call the Northland or Northern Tier Libraries to inquire about their donation policies.

**Stay Updated:** Please watch for updates throughout this time by visiting our website at [www.shalerlibrary.org](http://www.shalerlibrary.org) or following us on social media. You can always call us at 412-486-0211.

*Thank you for your patience and kindness as we improve your SNHL!*

### HOT TOPICS

LEGAL ISSUES IN PLAIN LANGUAGE

Join us for any of these three seminars to demystify legal topics and help you plan for the future.

Rev Trust vs Wills in PA - the good, the bad, and the ugly.

WEDNESDAY, SEPTEMBER 18, 1:30-2:30PM

PLEASE REGISTER

Estate Planning is More than a Will

WEDNESDAY, OCTOBER 16, 1:30-2:30PM

PLEASE REGISTER

Medicare and Medicaid Basics for our Aging Population.

WEDNESDAY, NOVEMBER 20,

1:30-2:30PM

PLEASE REGISTER



Presented by Rebecca A. Olds, Nora Curley Peace, and Jeanne Marie Marquette, Attorneys at Law with Pittsburgh Estate Law.

### A GREAT BIG THANK YOU!!!

We can't thank our sponsors enough for making our summer events so successful.

Our Touch-A-Truck event in June and our Car Cruise in August



were amazing.



Please be sure to support our local businesses and organizations.



# Programs

## The History Of Pro Football in Pittsburgh: Heartaches to Glory

Friday, September 13, 1:30pm

[REGISTER HERE](#)

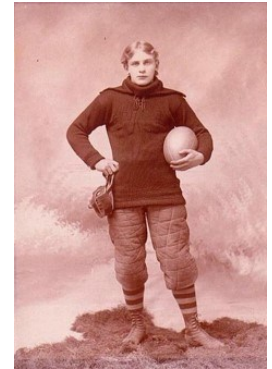


Think you know the Steelers' history? Think again! Come find out what you don't know about the history of Football in our hometown!

- ⇒ Did you know that professional football started on the North Side of Pittsburgh?
- ⇒ What were the Pittsburgh Steelers called before they became the Steelers?
- ⇒ How many coaches have the Pittsburgh Steelers had since 1969?

Come learn the answers and more as local researcher Jim Haller shares the history of professional football in Pittsburgh.

Presenter Jim Haller grew up on the North Side of Pittsburgh and is a life-long resident of Shaler. He is a docent and ambassador for the Senator John Heinz History Center and a local sports history enthusiast.

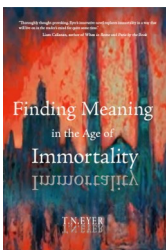


**Local Authors take us on  
Time-Traveling/Speculative Journeys  
Tuesday, September 17, 6:30pm  
[REGISTER HERE](#)**

*What does the future hold?*



*Myriad* is a mind-bending sci-fi thriller that will keep readers guessing to the very end. Agent Miriam Randle works for Life-Time, a private law enforcement agency that undertakes short-term time travel to erase crimes before they occur. Set in Pittsburgh!



*Finding Meaning in the Age of Immortality*—A cure for mortality has just been invented—but it comes with a prohibitively steep price tag and requires vast quantities of human blood to manufacture. The world become divided into the mortals and immortals, the haves and have-nots.

Join local authors Joshua David Bellin & T.N. Eyer as they take us on a journey to the future with their stories...and share their writing journeys.

Learn more at:

[Joshua David Bellin, Sci-Fi Author](#)

[TN Eyer | Speculative Fiction Author](#)

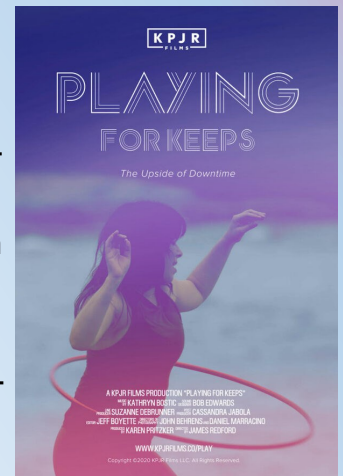
## The Importance of Play

September 26, 6:00pm

Join us for a viewing of this documentary on play and our health, followed by a panel discussion.

[REGISTER HERE](#)

PLAYING FOR KEEPS examines the importance of play and downtime for all of us—children, adults, seniors, and animals. It is a tapestry of interwoven characters that takes a look at the health benefits of the play state as well as its recent decline in our lives.



A documentary film by KPJR films.

Panelists include musician/educator Destin LeCornu; writer/gymnastics coach Lainy Carlsaw; and theatre director/educator Wayne Brinda. Pick up a brochure for details on the panel!

# Programs



## TELLING TALES: THE ART OF STORYTELLING



**TUESDAYS: SEPT. 3,  
OCT. 1, NOV. 5 AND DEC. 3  
6:30 - 7:30 PM**

There are lots of ways to tell stories! Find what suits you as we explore and learn about storytelling. Listen, learn, and share at this evening for adults. Most everyone has a story to share. Engage with other adults as we learn, listen, and play while we tell stories.

[REGISTER HERE](#)

Presented by Storyteller,  
Kathy Maron-Wood

# Ongoing Programs

## Shaler Library Writers' Group

**Mondays, 6:00pm (by Zoom and in-person)**

Zoom sessions weekly and one in-person meeting on the 4th Monday of each month. Community-led by Jim Binz. If you are interested, please email Jim at [jf.binz@gmail.com](mailto:jf.binz@gmail.com).

## Sense and Sound: Monthly Poetry Series

**Last Tuesday of each month, 6:30pm**

Think poetry isn't for you? You might be surprised! Join us on the last Tuesday of each month at 6:30pm to explore poets and poetry.

Register at: [Tinyurl.com/shalerpoetry](https://tinyurl.com/shalerpoetry)

## ACT OUT: Reader's Theater for Adults/Teens

**Third Tuesday of each month, 6:30pm**

Are you interested in joining? Please contact us first for more information! Call or text David Jones at 412-606-6131 or email Miss Ing at [rev.kalchthaler@gmail.com](mailto:rev.kalchthaler@gmail.com).

Register at: [tinyurl.com/shalertexter](https://tinyurl.com/shalertexter)

## WEDNESDAY MORNING WAKE-UP!



**Dancercise for Adults**  
**September 4 – November 6**  
**from 8:30 to 9:15 a.m.**



### Dance along to the oldies!

Dance along with the oldies but goodies! Move at your own pace! Great exercise and even more fun! No registration is necessary! Questions? Contact Miss Ing at [kalchthaleri@shalerlibrary.org](mailto:kalchthaleri@shalerlibrary.org)

### Fall Sneak Peek—

Historic Buildings of North Park—October 18  
Protecting Yourself from Frauds & Scams—October 24  
Drug Take-Back: October 26  
Friends of SNHL Fall Book Sale: November 1-3

## Caring for a Loved One with Cognitive Issues? Find some support with these two offerings....

### Dementia Friends Information Session

First Friday of the month at  
10:30am.



Register: [tinyurl.com/shalerfriends](https://tinyurl.com/shalerfriends)

or call the Library for assistance.

Join us to learn more about Dementia Friends of Pennsylvania and the ways in which we can help to create a more positive experience for those living with dementia.

### Caring for Caregivers: A monthly series for those caring for loved ones.

Third Wednesday of the month at 1:30pm.

Registration is helpful but not required. Walk-ins always welcome. Visit our Event Calendar to register.



Led by Erin McMaster, a Memory Care Advisor from Promedica Memory Care.

Ask about our Caregiver Collection of materials too!

# News & Notes

## Library Scheduling Notes!

The Library's schedule will be adjusted as follows:

**Sunday & Monday, September 1 & 2:**  
CLOSED for the Labor Day Holiday



**Saturday, September 21:**  
CLOSED for Shaler Homecoming  
Visit the SNHL Table!



**Thursday, October 31:**  
CLOSE at 5:00pm (Have a safe Halloween!)



## THANK YOU!!

A shout-out to all of you who participated in our Summer Reading Programs this year! Hundreds of folks read thousands of books. Some were lucky winners of prizes but we all win when we read! Ask us anytime for a good book suggestion....

Our ongoing thanks to the **Friends of Shaler North Hills Library** for all their support of our programs!

Please remember to thank our sponsors for their support and patronize their businesses!

### **In-Kind Donations of passes from:**

Cone Zone—Ice Cream Coupons for all!

- Children's Museum of Pittsburgh
- Fun Fore All Family Fun Park
- Heinz History Center
- Phipps Conservatory & Botanic Garden
- Pittsburgh City Theatre
- Pittsburgh Civic Light Opera
- Pittsburgh Opera
- Pittsburgh Zoo & Aquarium
- Pittsburgh Steelers—Cam Hayward Signed Photograph
- Prime Stage Theatre

### **Gift Cards from:**

- Big Burrito Group
- Blue Goose Saloon
- Body Bar Experience
- Eat'n Park
- Nox's on 8
- Ruckus Coffee Gallery & Cafe
- Three Brothers Bagels
- Z Florist

### **Financial Support:**

- J&T Tire
- Peace Dental
- Pittsburgh Estate Law

Join the...

**Friends of the Shaler North Hills Library!**



Show your love of the Library by joining our Friends group. Membership is only \$15.00, \$25.00 for household.

## ATTENTION LIBBY AND HOOPLA USERS!

We know you love your eBooks and we're happy to offer these services. In order to keep offering these and manage the budget, there will be some changes to the borrowing limits coming up **September 1**.



Please note:

- When you first log into Libby you will need your PIN from your Library Account. Ask us to add one or reset if you don't remember yours.
- Libby borrows will now be set at 10.
- Libby holds will now be set at 10.
- Hoopla borrows will now be set at 5.



You can help plan ahead by using wish lists and favorites to remember books you'd like to borrow in the future. As always, ask us for help!

**Kids or grandkids? Stay in the know for all our fabulous programs by visiting the website:**

**<https://www.shalerlibrarykids.org/>**

**Fun for all ages! From birth through teens.**



# Community News

**24TH ANNUAL ROTARY GOLF OUTING**  
**MONDAY SEPTEMBER 16TH**

**BENEFITING SHALER AREA COMMUNITIES**

WILDWOOD GOLF CLUB | 2195 Sample Road Allison Park, PA 15101

- Registration/Lunch – 11:00 AM
- Shotgun Start – 12:30 PM
- Dinner/Raffle Drawings – 5:30 PM
- Auction for Round of Golf at Oakmont

Proceeds from this year's event will go to support the following local causes:

- College Scholarships for Local High School Seniors
- Support Of Community Food Banks & Local Nonprofits
- Local Youth Organizations, Scholarships for Kids Summer Camps
- Shaler Backpack Initiative

**PRIZES FOR TOP THREE TEAMS' SCORES!**  
 LONG DRIVE, LONG PUTT and CLOSEST TO THE PIN CONTESTS!

Choose YOUR Experience This Fall! Shaler North Hills Library has passes to visit SIX different historic sites and museums:

- \* The Heinz History Center (including Ft. Pitt & Meadowcroft Rockshelter)
- \* Braddock's Battlefield
- \* The Depreciation Lands Museum
- \* Fort Ligonier
- \* Historic Ft. Steuben
- \* Pennsylvania Trolley Museum

Reserve your week at the Reference Desk or call us at 412-486-0211. (free admission for 2 adults, up to 6 kids).

For each site you visit before **October 31, 2024**, you are eligible for one entry for a prize basket drawing. Scan the code to enter the raffle.



And watch for virtual programs for each site this fall!



Visit the township website for details on all their events!

<https://www.shaler.org/>

## Mission Mahi Food Truck

Yumminess Coming Your Way!

October 5, 11:30am-1:30pm

Need some lunch ideas? Fish tacos! Chicken tacos! Vegetarian options too! Add some fries or coleslaw and make it a meal.



Swing by our front parking lot and grab some to go.

## Shaler Township's COMMUNITY YARD SALE

6th Annual Community Yard Sale at Kiwanis Park  
 Saturday, September 7 from 8:30am-2:00pm

\$20 per parking space - Limited to 80 spaces  
 Bring and set up your own table beginning at 7:30am.

Registration forms available at [www.shaler.org](http://www.shaler.org) or call the Township Office at (412) 486-9700 to sign up.

Deadline to register is Friday, August 30 or until all spots are filled.

Note: All unsold items must be taken away with you.



Elfinwild Lions Club is sponsoring an oldies dance at St. Ursula Church on Saturday, **October 12**. Tickets are available for sale at the Library. They are \$25 each, cash or check (payable to Elfinwild Lions Club) only!

